



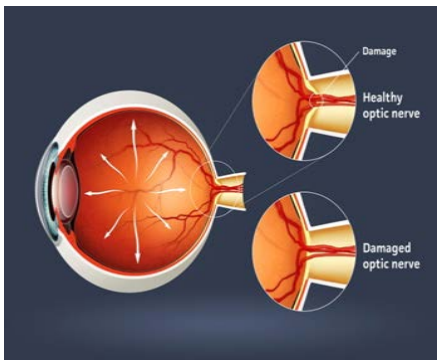
Arizona Medical Marijuana Program Newsletter

January 2015

UPDATING AND INFORMING QUALIFYING PATIENTS

IN THIS ISSUE:

Glaucoma: A Qualifying MM Condition



Most people know about the condition that allows them to use medical marijuana, but may not know much about the other qualifying conditions. You may run into someone at a dispensary with a different condition and be curious. With the 2010 ballot initiative, voters approved using marijuana for eight medical conditions and to help treat or manage the symptoms of any disease if the person had any of five specific aggravating factors. In the coming months, we're going to look at some of the qualifying conditions. This month we're exploring glaucoma.

Glaucoma is a group of diseases that impact your eyes and vision. A clear fluid flows in and out of the space at the front of the eye, nourishing nearby tissues. Glaucoma causes the fluid to pass

through too slowly or to stop draining altogether. As the fluid builds up, the pressure inside the eye increases, causing damage to the optic nerve and vision loss according to the University of Maryland Medical Center (UMMC).

The Medical Center's website say open angle glaucoma, the most common form of the disease, affects about 3 million Americans and is the leading cause of blindness in the United States

UMMC says certain groups of people are more at risk for glaucoma: African Americans over age 40, everyone over age 60, especially Mexican Americans, people with a family history of glaucoma, those with sedentary lifestyles or who take antihistamines or blood pressure medication.

There is no cure for glaucoma, but early detection can limit the loss of vision. While the most conventional treatments are medications, there are some surgeries and complementary therapies that can be used to help live with glaucoma. The list ranges from eating healthier foods to taking vitamins or other supplements.

In the 1970s, the National Eye Institute (part of the National Institutes of Health) supported studies of marijuana use to help glaucoma. It discontinued the studies because of side effects of marijuana and new FDA-approved medication seemed to work better. In Arizona glaucoma patients can use medical marijuana because of the Arizona Medical Marijuana Act.

News and Updates

PTSD recognized as qualifying condition.

Cycle for adding new qualifying conditions begins.

Page 2

Common Questions and Resources

This section answers some of your most commonly asked questions.

Page 3

List of Operating Dispensaries

An updated list of operating dispensaries.

Page 4

DID YOU KNOW?



Oxford Dictionaries has declared *vape* the word of the year for 2014. Vape is a verb meaning to inhale and exhale the vapor produced by an electronic cigarette or similar device. Computer robots searching the web found use of the word “vape” doubled in 2014 compared to 2013.

FAST FACTS

60%

Twenty -five of the 615 physicians who certified medical marijuana patients in fiscal year 2014 wrote 60% of the certifications.

QUESTIONS?

Email m2programsupport@azdhs.gov. Patients can also live chat with the program staff Monday through Friday from 8 a.m. to 5 p.m. The live chat function can be found by visiting the program website, www.azhealth.gov/medicalmarijuana/

For dispensary questions, please email m2dispensaries@azdhs.gov

PTSD Recognized as Qualifying Medical Condition Starting in January

Starting January 1, 2015, medical marijuana cardholders can request a physician certification for the palliative care of Post-Traumatic Stress Disorder (PTSD). ADHS has revised the physician certification form to include an additional physician attestation that the patient is receiving treatment other than medical marijuana for PTSD. The online qualifying patient application also has been revised to allow patients to select PTSD as a qualifying condition.

Next Cycle for New Debilitating Conditions Begins

ADHS will accept petitions to add new debilitating medical conditions to the existing list of debilitating medical conditions beginning Monday, January 26, 2015 through Friday, January 30, 2015 by close of business. Petitions postmarked prior to or after these dates will not be accepted.

For a condition to be considered, all petitions must be sent via U.S. mail only to ADHS; P.O. Box 1900; Phoenix, Arizona 85005.

Each petition must include all of the following components:

*A completed submittal cover sheet that includes:

- *The entity's name, mailing address, name of contact individual, telephone number, and email address;
- *The name of the medical condition the entity is requesting be added;
- *A description of the symptoms and other physiological effects experienced by an individual with the medical condition or a treatment of the medical condition that may impair the ability of the individual to accomplish daily living activities;
- *The availability of conventional medical treatments to provide therapeutic or palliative benefit for the medical condition or a treatment for the condition;
- *A summary of evidence that the use of marijuana will provide therapeutic or palliative benefit for the medical condition; and

*Articles, published in peer-reviewed, scientific journals, reporting the results of research on the effects of marijuana on the medical condition or a treatment of the medical condition supporting why the medical condition should be added. *The full article must be submitted (no abstracts).*

ADHS will notify the requester within 30 days that the petition was received. For more information, please visit our website at:

<http://www.azdhs.gov/medicalmarijuana/debilitating/>

Common Questions

The Department receives many questions about the Program every day. You can submit any questions you would like answered in the newsletter by emailing m2programsupport@azdhs.gov. Check here for answers to some of the most commonly asked questions.

Q UESTION:

Shouldn't my medical insurance plan pay for my medical marijuana?

ANSWER:

According to Arizona Revised Statute (A.R.S.) §36-2814 of the Arizona Medical Marijuana Act, government or private health insurance providers are **not** required to repay a patient for any costs associated with his or her medical marijuana treatment.

Resources

Medical Marijuana Program

Website: <http://www.azhealth.gov/medicalmarijuana/> (includes chat function)

Email: m2programsupport@azdhs.gov or m2dispensaries@azdhs.gov

Please email m2support@azdhs.gov to be removed from the printed or emailed newsletter lists. Please include your name and date of birth.

Frequently Asked Questions:

<http://www.azhealth.gov/medicalmarijuana/faqs/index.php>

Poison Control Hotline

Phone: 1-800-222-1222



List of Operating Arizona Licensed Dispensaries—as of 1/1/2015

Dispensary Name	Address	Phone Number
Apache Junction Nature's Wonder Inc.	68 S. Ironwood Drive	(480) 982-1529
Benson Total Accountability Patient Care, Inc.	226 E. 4 th St.	(520) 586-8710
Bisbee Natural Relief Clinic Inc. DBA: Green Pharmacy	1191 S. Naco Hwy	(520) 686-8708
Black Canyon City Total Accountability Systems I, Inc. DBA: BC Wellness Center	34550 S. Old Black Canyon Hwy Ste. 101	(623) 374-5460
Bullhead City Valley Healing Group, Inc.	2840 Highway 95, Ste. 422	(928) 758-3830
Casa Grande Medical Pain Relief, Inc.	1860 E. Salk Dr., Ste. B-1	(520) 350-9880
Cave Creek Arizona Natural Selections	6812 E. Cave Creek Rd. #3	(480) 575-1245
Chino Valley Organica Patient Group Inc.	856 S. State Route 89	(928) 636-5566
Clifton Holistic Patient Wellnes Group	211 Chase Creek Road	(928) 432-7212
Cochise Cathy's Compassion Center	1825 W. Dragoon Road	(866) 291-8797
Coolidge The Desert Valley Pharmacy Inc.	1302 W. Industrial Dr. Bldg #7	(520) 723-7710
Cottonwood Yavapai Herbal Services, Inc.	675 E. State Route 89A	(928) 634-5233
El Mirage Arizona Cannabis Society LLC	8376 N. El Mirage Rd. Bldg. 2, Ste. 2	(888) 249-2927
Eloy Jamestown Center	3755 W. Houser Rd.	(520) 233-7389
Flagstaff Desertview Wellness & Healing Solutions DBA: Green Pharmacy High Mountain Health LLC RCH Wellness Center LLC DBA: Greenhouse of Flagstaff	7121 N. HWY 89 1250 S. Plaza Way Ste. A 460 N. Switzer Canyon Dr. Suite 100	(928) 522-6337 (928) 774-5467 (928) 351-7775
Fountain Hills Sixth Street Enterprises, Inc. DBA: Nature's AZ Medicines Inc.	16913 E. Enterprise Dr.	(480) 420-3135
Gilbert Absolute Healthcare Inc.	175 S. Hamilton Pl. Bldg. 4 Ste. 110	(480) 361-0078

Glendale

Arizona Organix	5301 W. Glendale Ave.	(623) 937-2752
PP Wellness Center	8160 W. Union Hills Dr. Ste A 106	(623) 385-1310
DBA: The Greenhouse		

Globe

Globe Pharmacy Inc.	200 N. Broad St.	(928) 793-4410
---------------------	------------------	----------------

Golden Valley

Nonprofit Patient Center	9313 N. US Highway 93	(928) 224-5959
--------------------------	-----------------------	----------------

Goodyear

Valley of the Sun Medical Dispensary Inc.	16200 W. Eddie Albert Way	(623) 932-3859
-------------------------------------------	---------------------------	----------------

Holbrook

Natural Herbal Remedies Inc.	752 Navajo Blvd.	(928) 524-2121
------------------------------	------------------	----------------

Lake Havasu City

High Desert Healing LLC	1691 Industrial Blvd.	(928) 453-9333
DBA: Havasu Green		

Kingman

CJK Inc.	2095 Northern Avenue	(928) 692-0000
DBA: Ultra Health Kingman		

Maricopa

Ponderosa Botanical Care Inc.	49237 W. Papago Rd. Ste. 3	(520) 568-7505
DBA: Ponderosa Releaf		

Mayer

CSI Solutions	10580 S. State Route 69	(928) 227-2658
DBA: Arizona Grassroots Dispensary		

Mesa

The Giving Tree Wellness Center of Mesa Inc.	938 E. Juanita Ave.	(480) 272-9888
Health For Life, Inc.	7343 S. 89 th Pl.	(480) 888-0247
Soothing Options, Inc.	3321 N. Reseda Circle Ste. 50 & 61	(480) 830-8251
DBA: Health For Life, Mesa North		
Kind Meds, Inc.	2152 S. Vineyard Road, Ste. 120	(480) 686-9302

Mohave Valley

Herbal Assist Inc.	6870 S. HWY 95 Ste. 251	(928) 768-4665
DBA: Mohave Green		

Oracle

Bloom Copper Country	1880 W. American Avenue	(520) 576-6088
----------------------	-------------------------	----------------

Oro Valley

Catalina Hills Botanical Care, Inc.	12152 N. Rancho Vistoso Blvd. C-140	(520) 797-3053
DBA: Catalina Hills Care		

Page		
	The Kind Relief Inc.	1500 Coppermine Rd. (928) 645-0222
Parker		
	High Desert Healing LLC DBA: Parker Green	3956 Moovalya Estates Dr. Ste. A-C (928) 667-0000
Payson		
	Desert Medical Campus Inc. DBA: Uncle Herb's Health Center	200 N. Tonto (928) 474-2420
Peoria		
	Green Desert Patient Center of Peoria DBA: Arizona Natural Selections	9275 W. Peoria Av. (623) 878-5954
Phoenix		
	AD, LLC DBA: Urban Greenhouse	2630 W. Indian School Rd. (623) 321-5010
	Arizona Natures Wellness DBA: Bloom Dispensary Phoenix	14 S. 41st Pl. (602) 396-5757
	AZ Compassionate Care, Inc. DBA: TruMed	1613 N. 40th St. (602) 275-1279
	Encanto Green Cross Dispensary	2620 W. Encanto Blvd. (888) 633-7411
	Horizon the Health Center	10040 N. Metro Parkway West (602) 870-8700
	Herbal Wellness Center, Inc.	4126 W. Indian School Rd. (602) 635-3502
	AAA Cinbad, Inc. DBA: The Holistic Center	21035 N. Cave Creek Rd. Ste, C5 (602) 842-5790
	Sixth Street Enterprises, Inc. DBA: Nature's AZ Medicines Inc.	2439 W. McDowell Rd. (480) 420-3145
	Sunflower Meds	10827 S. 51 st St. (480) 350-7624
	PARC	4201 E. University Dr. (602) 437-1645
	Phoenix Relief Center Inc.	6330 S. 35th Ave. Ste 104 (602) 276-3401
	The Giving Tree Center of North Phoenix Inc.	21617 N. 9th Ave. (623) 242-9080
Prescott		
	203 Organix, LLC DBA: SWC Prescott	123 Merritt Street (928) 778-5900
Prescott Valley		
	Yavapai Herbal Services Inc.	6287 E. Copper Hill Drive, Suite A (928) 227-2441
Quartzsite		
	Wickenburg Alternative Medicine LLC	511 E. Main St. (928) 927-4200
Rio Rico		
	Greenmed, Inc.	1115 Circulo Mercado (520) 281-1587
Safford		
	Natural Remedy Patient Center	1362 Thatcher Blvd. (928) 432-6959
Sahuarita		
	Broken Arrow Herbal Center, Inc. DBA: Ultra Health Green Valley	1732 W. Commerce Point Pl. (520) 289-8030

Scottsdale

Monarch Wellness Centers, Inc. 8729 E. Manzanita Drive (480) 991-3752

Sedona

Zonacare 465 Jordan Rd. (928) 282-8122

Show Low

Green Hills Patient Center, Inc. 3191 W. White Mountain Rd, Ste. A (928) 537-4888

Sierra Vista

Phytotherapeutics of Tucson 1633 S. Highway 92, Suite 7 (520) 335-8570

Springerville

Natural Relief Clinic Inc. 334 E. Main Street (928) 239-8493
DBA: Green Pharmacy

Sun City

White Mountain Health Center 9240 W. Bell Road, Ste. 108 (623) 374-4141

Superior

Superior Organics 750 S. Belmont Ave. (520) 689-1960

Surprise

All Greens Inc. 13431 W. Westgate Dr. Suite #103 (623) 214-0801

Taylor

Compassionate Care of AZ, Inc. Crossroads of Airport Loop & Pinedale Rd. (928) 536-5151
DBA: Kompo Care

Tempe

Salubrious Wellness Clinic Inc. 2009 E. 5th St. Ste. 11 (480) 245-6751
DBA: SWC Tempe

Verde Dispensary 710 W. Elliot Rd. Ste. 102 (480) 777-2100
DBA: Harvest of Tempe

Tucson

Earth's Healing Inc. 2075 E. Benson Highway (520) 373-5779

Green Medicine 112 S. Kolb Rd. (520) 886-1003
DBA: Southern AZ Integrated Therapies

PurpleMed Inc. 1010 S. Freeway Suite 130 (520) 398-7338

Rainbow Collective Inc. 4695 N. Oracle Rd. Ste #117 (520) 293-3315
DBA: Bloom Dispensary Tucson

The Green Halo LLC 7710 S. Wilmot Rd. (520) 664-2251

Copper State Herbal Center, Inc. 6205 N. Travel Center Drive (520) 395-0230
DBA: The Apothecary

Medmar Tanque Verde, LLC 8060 E. 22nd St. Ste. 108 (520) 886-1760
DBA: Desert Bloom Releaf Center

Rainbow Collective Inc. DBA: The Prime Leaf	4120 E. Speedway Blvd.	(520) 207-2753
Verde Wellness Center, Inc. DBA: The Downtown Dispensary	221 E. 6th Street, Ste. 105	(520) 838-0492
Nature Med Inc.	5390 W. Ina Rd.	(520) 620-9123
The Herbal Pharmacy of Central Arizona, Inc.	10134 N. Oracle Road, Ste. 170	(520) 955-9233
Wickenburg		
MMJ Apothecary	1175 W. Wickenburg Way Ste. 4	(928) 684-8880
Williams		
Cannabis Research Group Inc. DBA: Route 66 Wellness Center	324 E. Railroad Avenue	(928) 635-9966
Winslow		
The Medicine Room, LLC	2015 W. 3rd Street	(928) 852-4169
Youngtown		
AAA Medical Marijuana Dispensary LLC DBA: Swell Farmacy	11200 W. Michigan Ave. Ste 5	(623) 444-5977
Yuma		
Jamestown Center	4340 E. 32 nd Street	(928) 920-7778